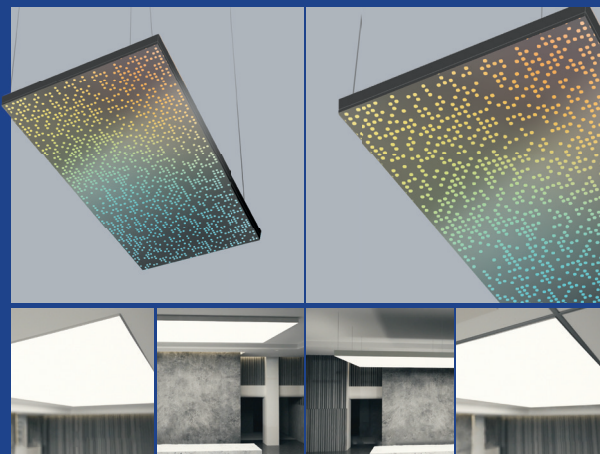


LumiPano™ Collection VEGA



Spec by:

Agency:

Project Name:

Type of Project:

Notes:



LIGHTING PERFORMANCE*

	Output	Size				
		2' x 2'	2' x 4'	4' x 4'	4' x 6'	4' x 8'
Power consumption (Watts)	Premium	64W	144W	324W	504W	720W
Delivered output (Lumens)		1117 lm	2514 lm	5657 lm	8800 lm	12572 lm

* Power Consumption and Delivered output values are based on 6500K CCT without any patterns.

ORDERING CODE

TLS	LP	VG	Rating	Size	Mounting
	Product	Engine			
TLS	LumiPano LP	Vega VG	Indoor IN	2' x 2' 2x2	Suspended Threaded Rods SPT
			Outdoor OUT	2' x 4' 2x4	Suspended Aircraft cables SPA
				4' x 4' 4x4	Recessed RD
				4' x 6' 4x6	Surface SF
				4' x 8' 4x8	

Frame color	CCT	Output*	Control	Standard Patterns*
Black BL	RGBW (6500K) RGBW65K	Premium RGBW (563 lm/sqft)* P	Stand alone SA	Fall FL
White WH			Madrix MA	Hive HV
Silver NS				LightSpeed LE
RAL RAL				Maze MZ
				Mondrian MD
				StarStream SS
				Custom Design CD

* Lm/sqft are calculated
at LED source

*See page 07

TECHNICAL SPECIFICATIONS

■ Diffuser



Material	Polycarbonate (PC)
Weight	Vary as per pattern
Fire classification	UL94
Light transmission	69%*

*Without any pattern

■ Perforated Sheet Color

Material	Aluminum			
Standard colors	Black 	White 	Silver 	RAL 

■ Frame color

Material	Aluminum			
Standard colors	Black 	White 	Silver 	RAL 

■ Lighting

Ingress protection	IP22 (indoor) IP65 (outdoor)
CRI	> 90 (white LED)
LM80 *	> 36,000 hours
Operating temperature	-30 °C TO 80 °C

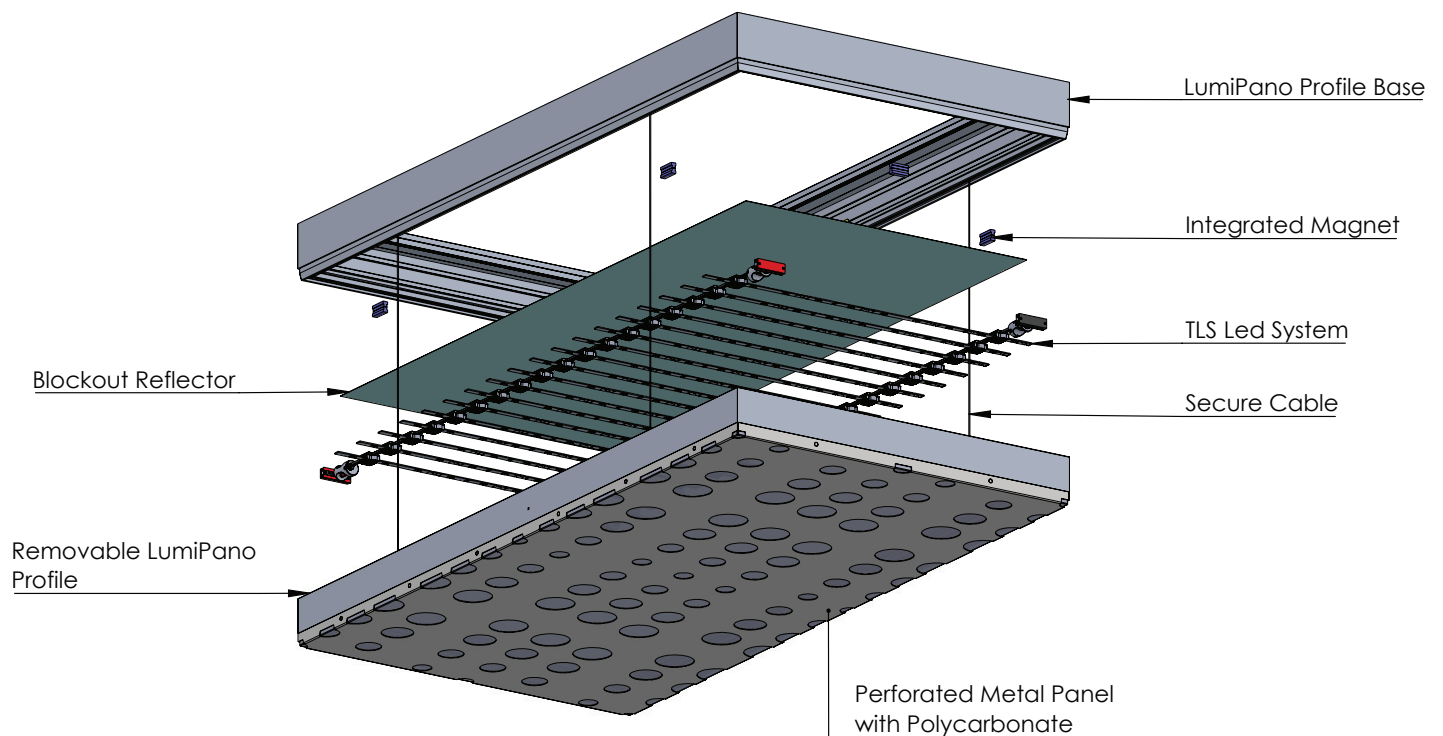
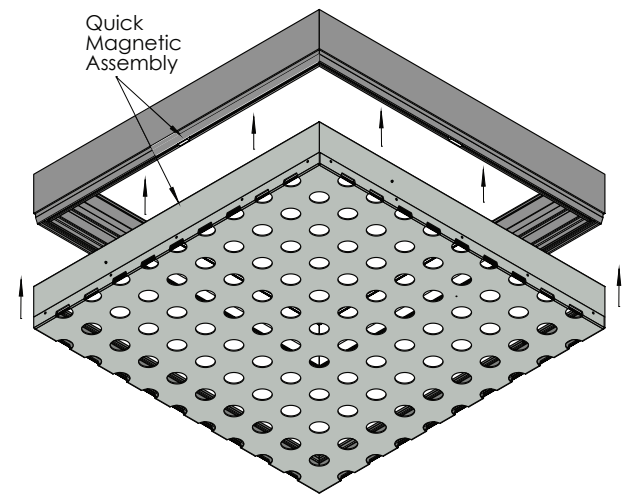
Note: *LM80 Test is only applicable to white pixels.

Warranty*	5-year limited warranty for LED
------------------	---------------------------------

* Warranty Terms and Conditions at www.tls-led.com/warranty

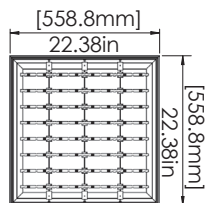
STRUCTURE

The LumiPano magnetic profile clipping technology allows for easy disassembly of the luminous panel to gain access to the lighting engine and the plenum above. The reassembly is as easy as clicking the framing back into position to hold the frame securely in place.

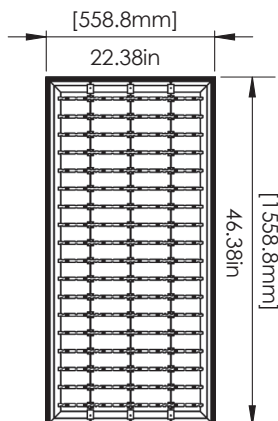


SIZES PREMIUM

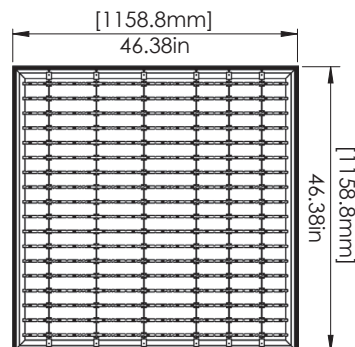
2'x2'



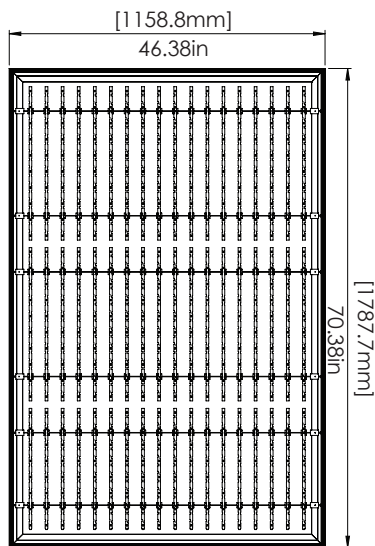
2'x4'



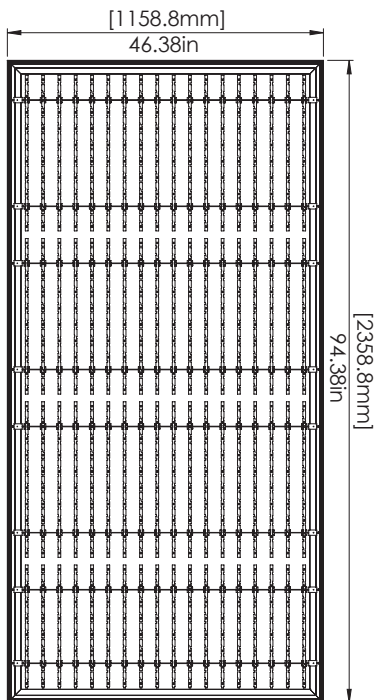
4'x4'



4'x6'



4'x8'



■ Weight Premium

Size	2'x2'	2'x4'	4'x4'	4'x6'	4'x8'
Kg	17.79	23.05	29.91	40.74	46.93
Lbs	39.22	50.82	65.94	89.82	103.46

*At 50% of perforation.

LIGHTING PERFORMANCE AND EFFICIENCY

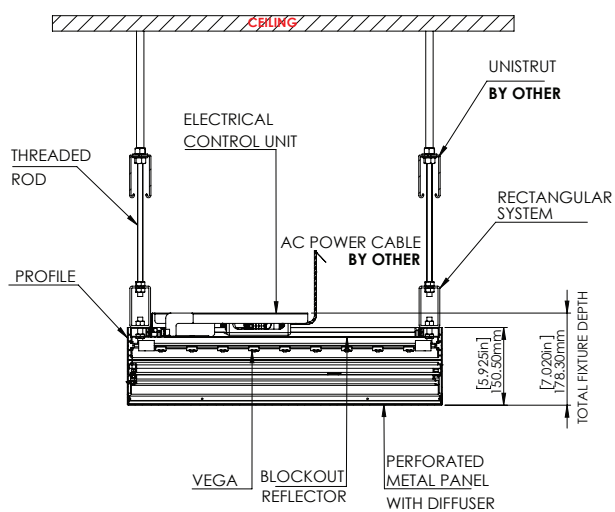
■ Light transmission

Patterns	Percent of Perforation	Output
Fall	31%	1754
Hive	37%	2093
LightSpeed	24%	1358
Maze	33%	1867
Mondrian	16%	905
StarStream	13%	735

*Lumens are calculated for 4'x8' fixture. Pattern will decrease the lumen output.

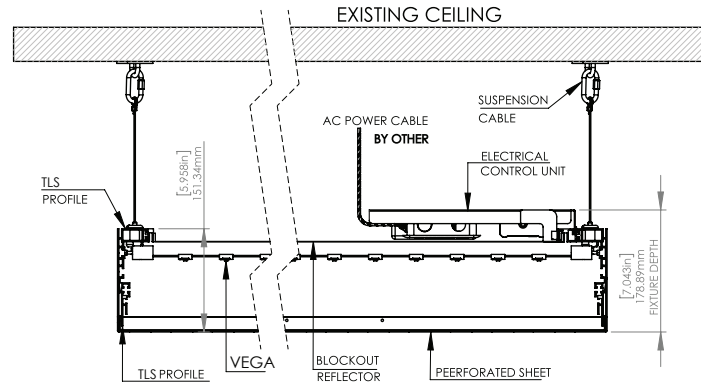
MOUNTING OPTIONS

■ Suspended with Threaded Rods (SPT)



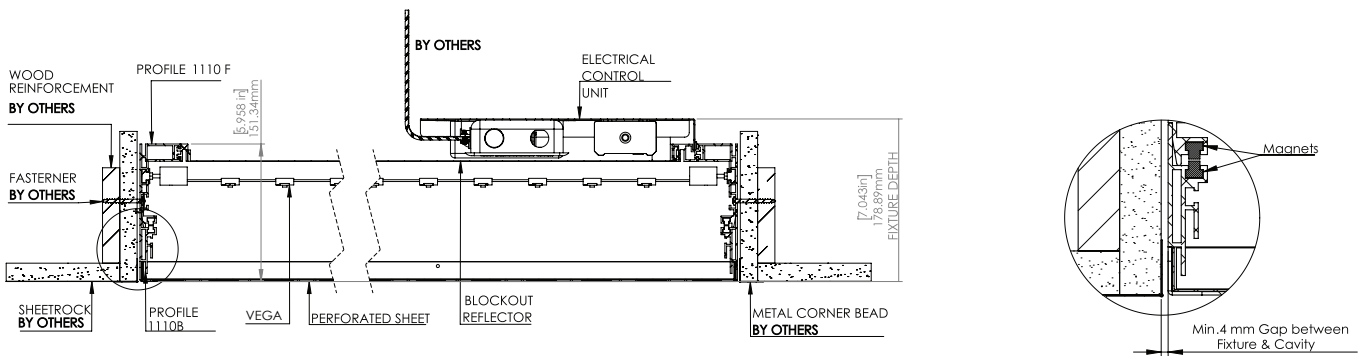
MOUNTING OPTIONS

■ Suspended with Aircraft Cables (SPA)



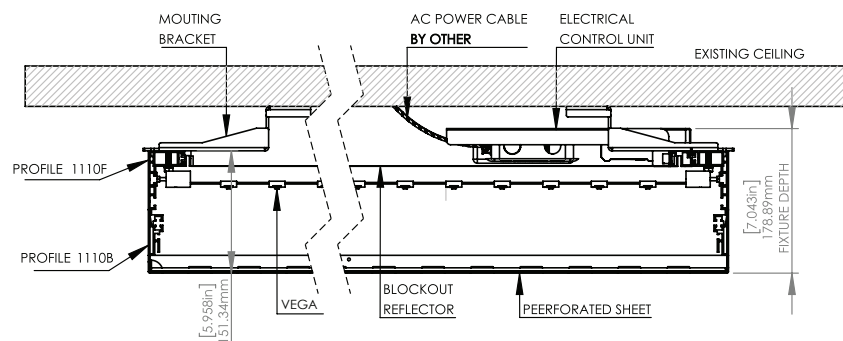
- Hooks to existing ceiling installed by others

■ Recessed (RD)



- Cavity to be 4 mm over nominal
- Cavity to be minimum 7" (177.8 mm) deep

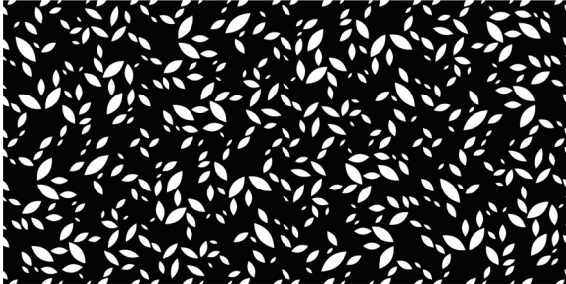
■ Surface (SF)



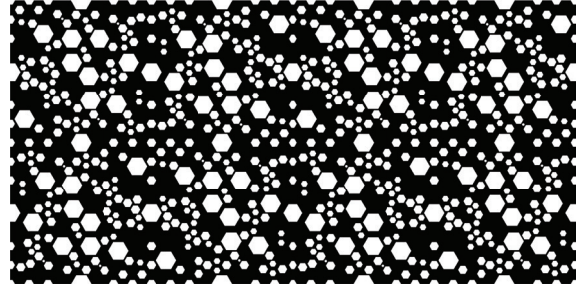
Note: Parts reference numbers are available upon request.

PATTERNS

■ Fall (FL)



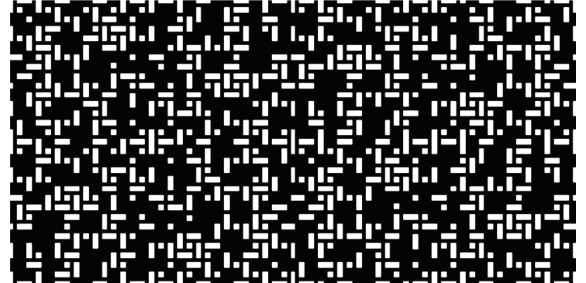
■ Hive (HV)



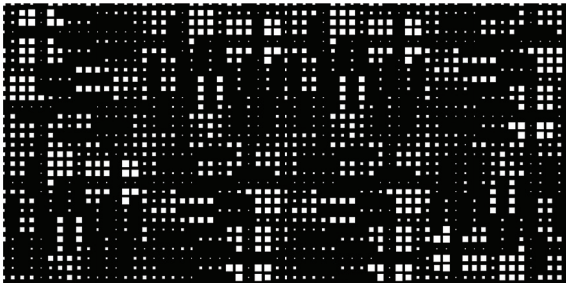
■ LightSpeed (LE)



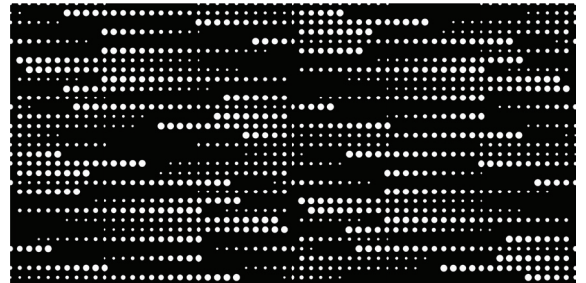
■ Maze (MZ)



■ Mondrian (MD)

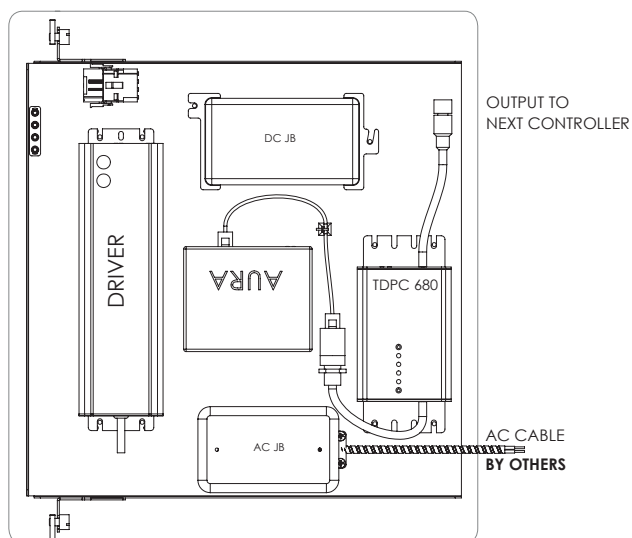


■ StarStream (SS)

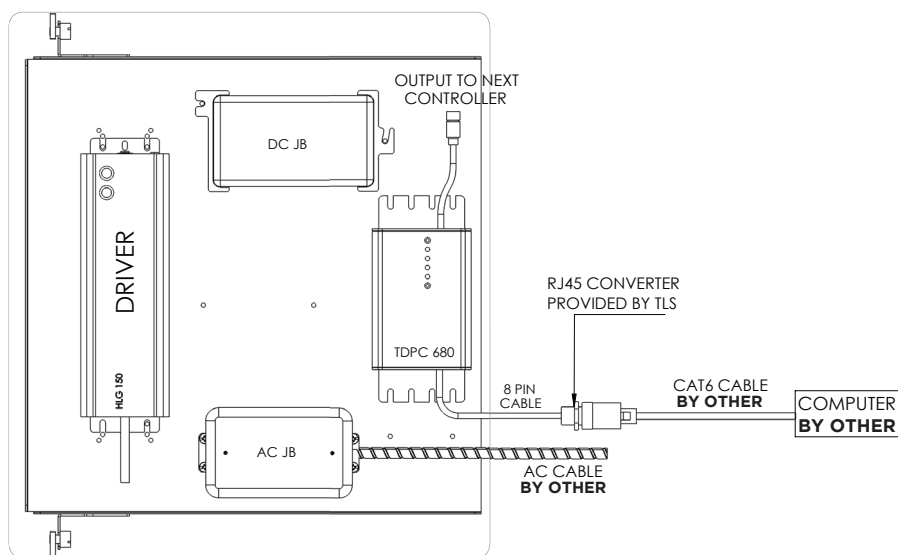


CONTROL

■ Stand alone (SA)



■ Madrix (MA)



■ Electrical

Driver models	HLG-60-24A, HLG-100-24A, HLG-150-24A, HLG-240-24A, HLG-320-24A
Input voltage	90-277 V AC, 47-63 HZ
Output voltage	21-24 V DC