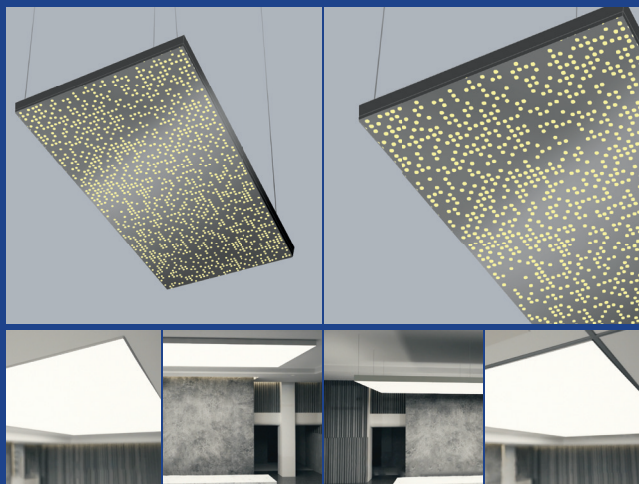


# LumiPano™ Collection SOLA



Spec by:

Agency:

Project Name:

Type of Project:

Notes:



IP22  
RATED



## LIGHTING PERFORMANCE\*

	Output	Size				
		2' x 2'	2' x 4'	4' x 4'	4' x 6'	4' x 8'
Power consumption (Watts)	Premium	22.4W	50.4W	113.4W	176.4W	252W
Delivered output (Lumens)		1515 lm	3409 lm	7669 lm	11930 lm	17043 lm

\* Power Consumption and Delivered output values are based on 6500K CCT without any patterns.

## ORDERING CODE

TLS	LP Product	SL Engine	Rating	Size	Mounting
TLS	LumiPano <b>LP</b>	Sola <b>SL</b>	Indoor <b>IN</b> Outdoor <b>OUT</b>	2' x 2' <b>2x2</b> 2' x 4' <b>2x4</b> 4' x 4' <b>4x4</b> 4' x 6' <b>4x6</b> 4' x 8' <b>4x8</b>	Suspended Threaded Rods <b>SPT</b> Suspended Aircraft cables <b>SPA</b> Recessed <b>RD</b> Surface <b>SF</b>

Frame color	CCT	P Output*	Control	Standard Patterns*
Black <b>BL</b> White <b>WH</b> Silver <b>NS</b> RAL <b>RAL</b>	2700-6500K <b>27K_65K</b> 2700-4000K <b>27K_40K</b>	Premium (859 lm/sq)* <b>P</b>	0-10V <b>0/10</b> Remote <b>RM</b> Dali <b>DA</b> DMX <b>DMX</b>	Fall <b>FL</b> Hive <b>HV</b> LightSpeed <b>LE</b> Maze <b>MZ</b> Mondrian <b>MD</b> StarStream <b>SS</b> Custom Design <b>CD</b>

\* Lm/sq are calculated at LED source

\*See page 07

## TECHNICAL SPECIFICATIONS

### ■ Diffuser



<b>Material</b>	Polycarbonate (PC)
<b>Weight</b>	Vary as per pattern
<b>Fire classification</b>	UL94
<b>Light transmission</b>	69%*

\*Without any pattern

### ■ Perforated Sheet Color

Material	Aluminum			
<b>Standard colors</b>	Black 	White 	Silver 	RAL 

### ■ Frame color

Material	Aluminum			
<b>Standard colors</b>	Black 	White 	Silver 	RAL 

### ■ Lighting

<b>Ingress protection</b>	IP22 (indoor)      IP65 (outdoor)
<b>CRI</b>	> 90 (white LED)
<b>LM80 *</b>	> 36,000 hours
<b>Operating temperature</b>	-30 °C TO 80 °C

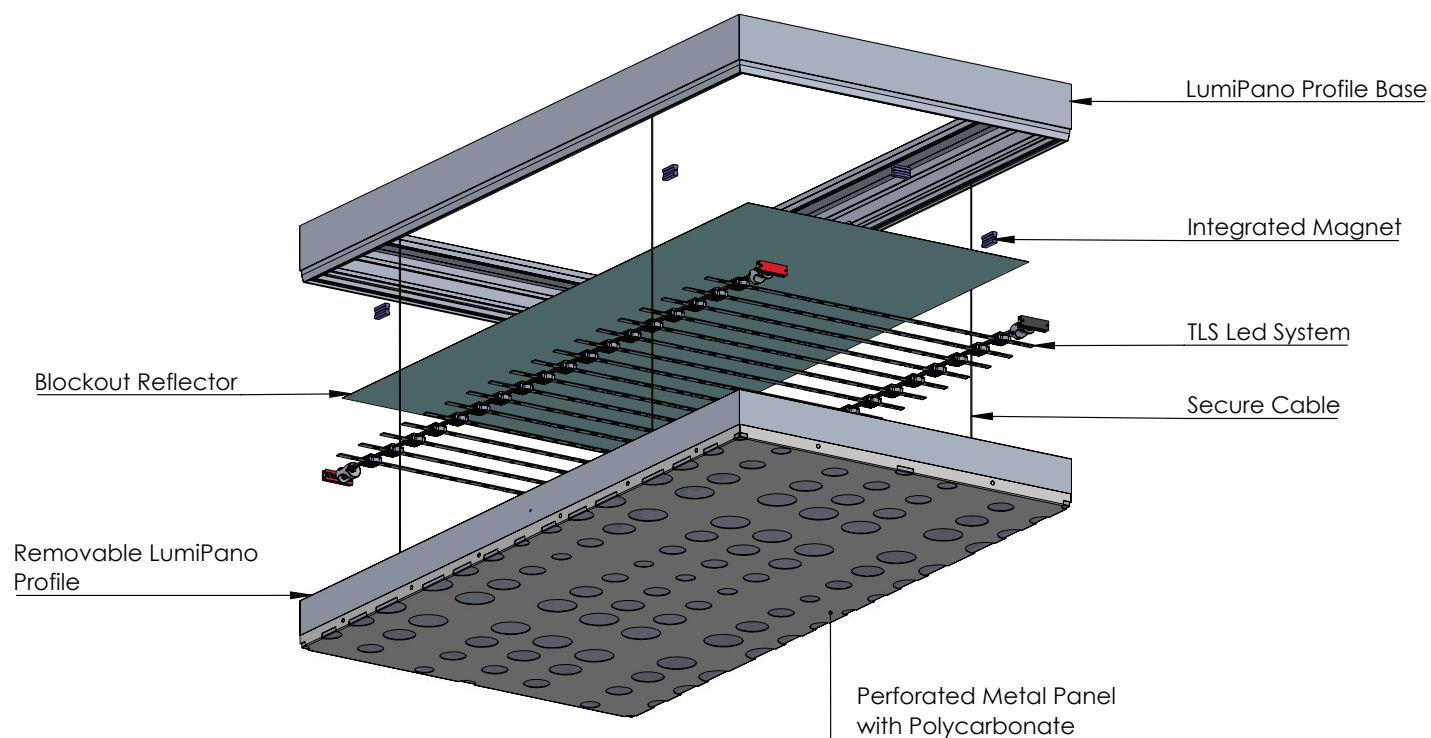
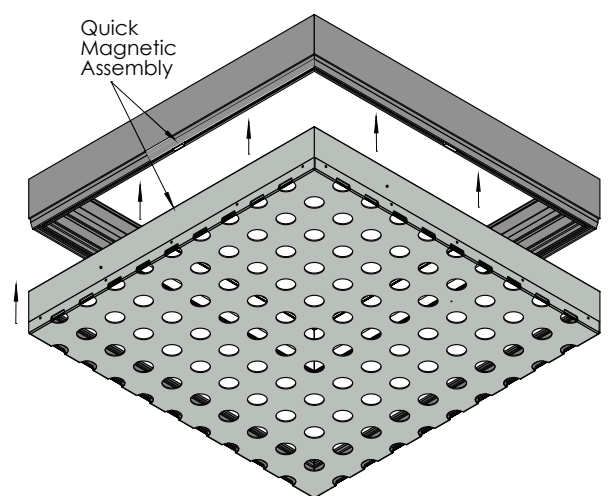
Note: \*LM80 Test is only applicable to white pixels.

<b>Warranty*</b>	5-year limited warranty for LED
------------------	---------------------------------

\* Warranty Terms and Conditions at [www.tls-led.com/warranty](http://www.tls-led.com/warranty)

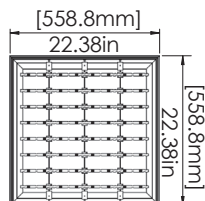
## STRUCTURE

The LumiPano magnetic profile clipping technology allows for easy disassembly of the luminous panel to gain access to the lighting engine and the plenum above. The reassembly is as easy as clicking the framing back into position to hold the frame securely in place.

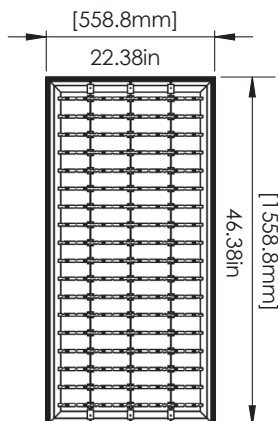


## SIZES PREMIUM

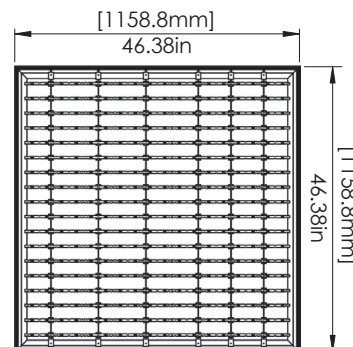
**2'x2'**



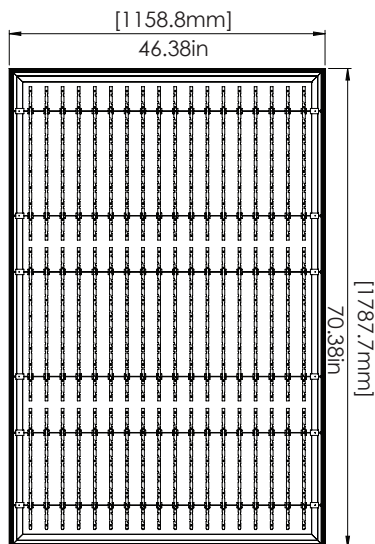
**2'x4'**



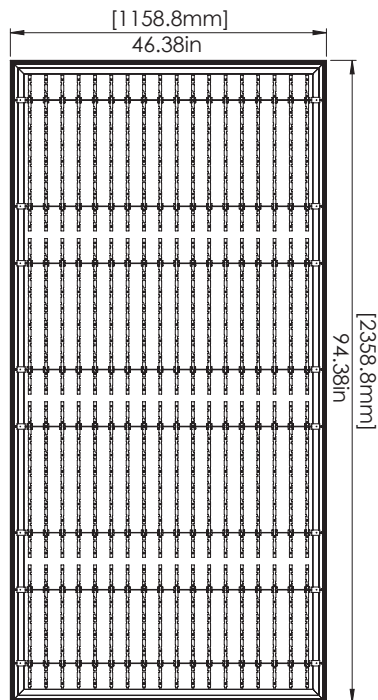
**4'x4'**



**4'x6'**



**4'x8'**



### ■ Weight Premium

Size	2'x2'	2'x4'	4'x4'	4'x6'	4'x8'
Kg	17.29	22.55	29.31	40.34	46.33
Lbs	38.12	49.71	64.62	88.94	102.14

\*At 50% of perforation.



## LIGHTING PERFORMANCE AND EFFICIENCY

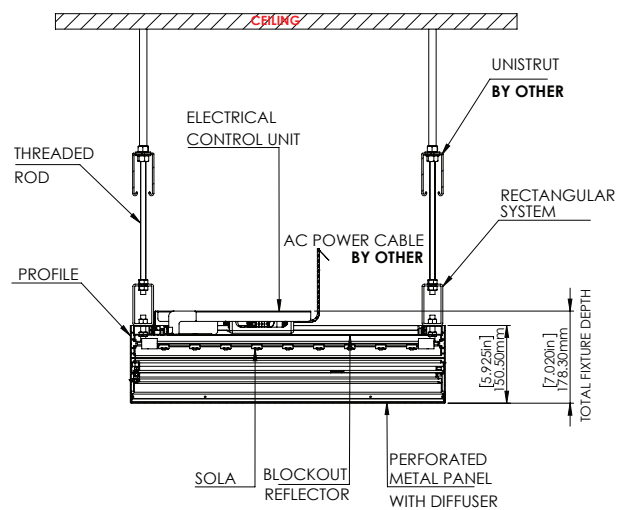
### ■ Light transmission

Patterns	Percent of Perforation	Output
Fall	31%	2377
Hive	37%	2838
LightSpeed	24%	1841
Maze	33%	2531
Mondrian	16%	1227
StarStream	13%	997

\*Lumens are calculated for 4'x8' fixture. Pattern will decrease the lumen output.

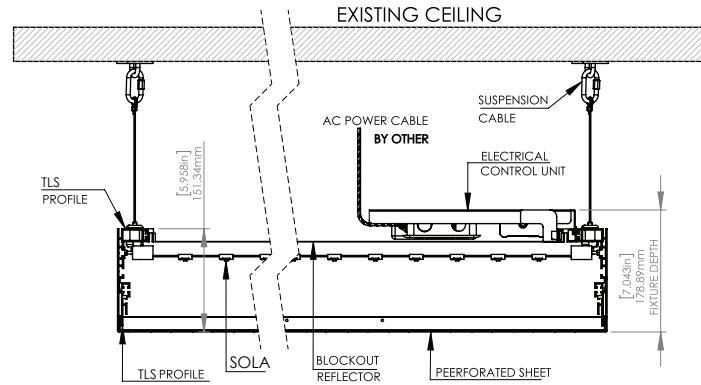
## MOUNTING OPTIONS

### ■ Suspended with Threaded Rods (SPT)



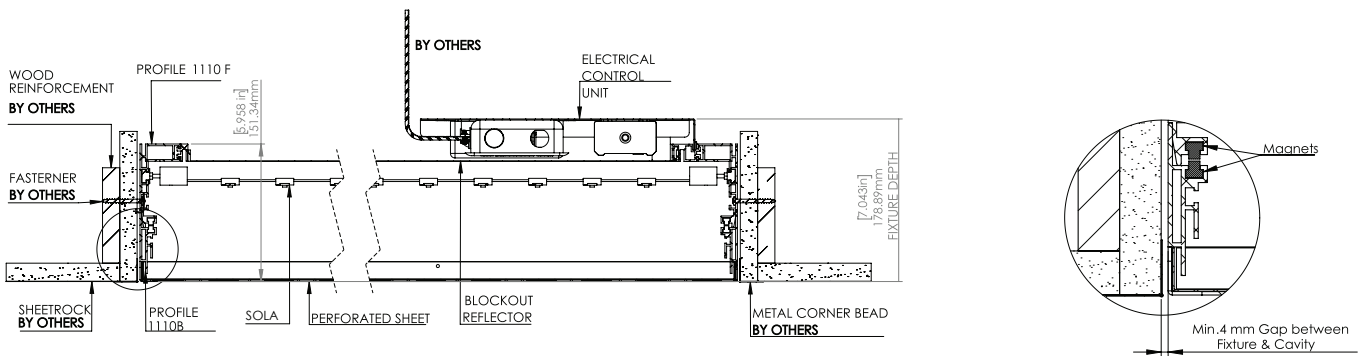
## MOUNTING OPTIONS

### ■ Suspended with Aircraft Cables (SPA)



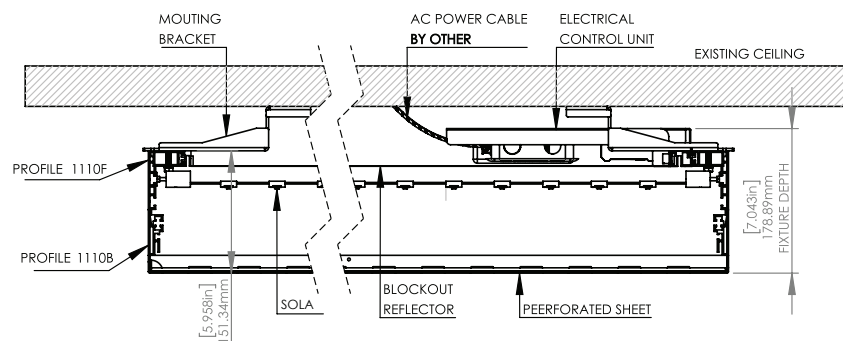
- Hooks to existing ceiling installed by others

### ■ Recessed (RD)



- Cavity to be 4 mm over nominal
- Cavity to be minimum 7" (177.8 mm) deep

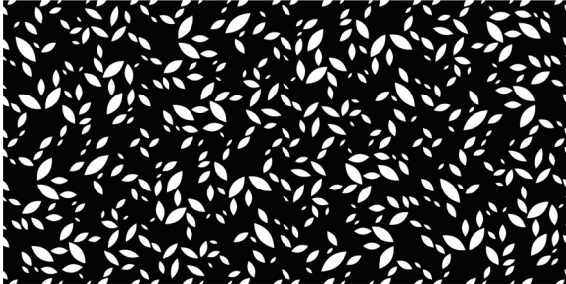
### ■ Surface (SF)



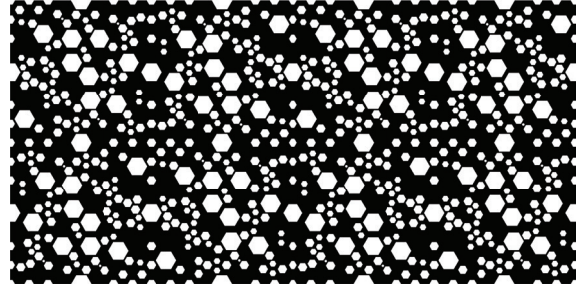
Note: Parts reference numbers are available upon request.

## PATTERNS

### ■ Fall (FL)



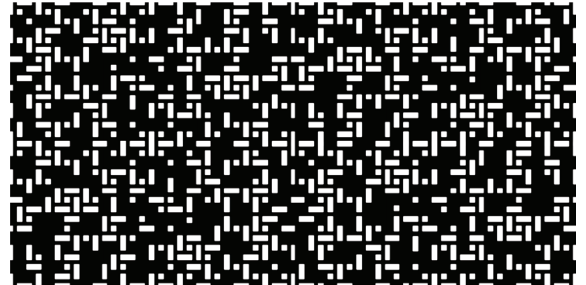
### ■ Hive (HV)



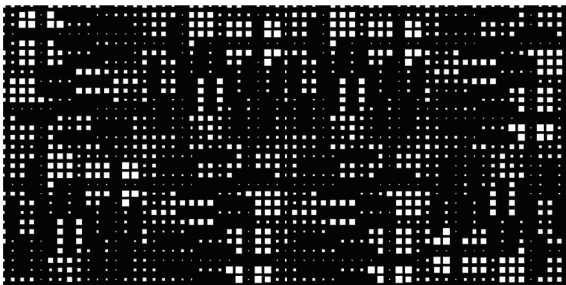
### ■ LightSpeed (LE)



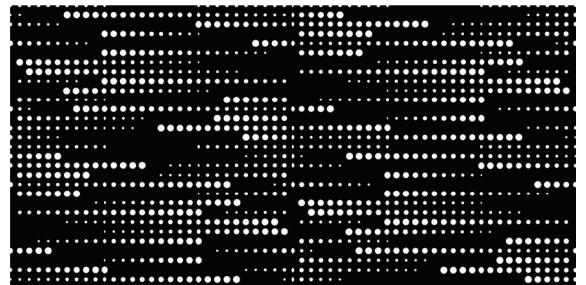
### ■ Maze (MZ)



### ■ Mondrian (MD)

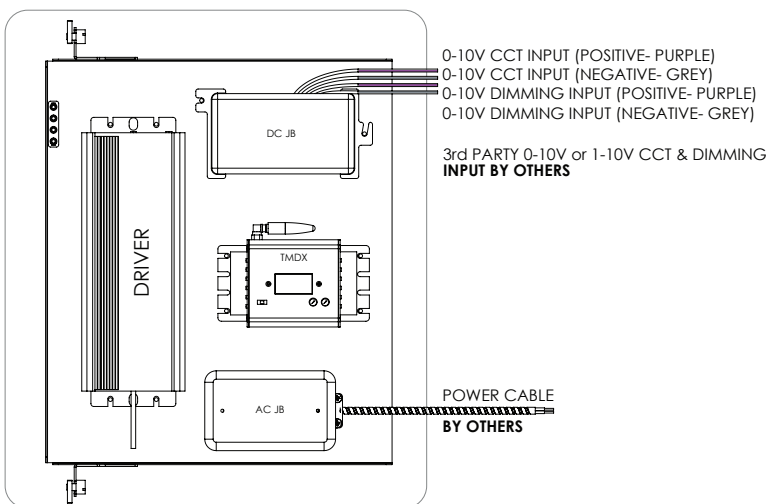


### ■ StarStream (SS)

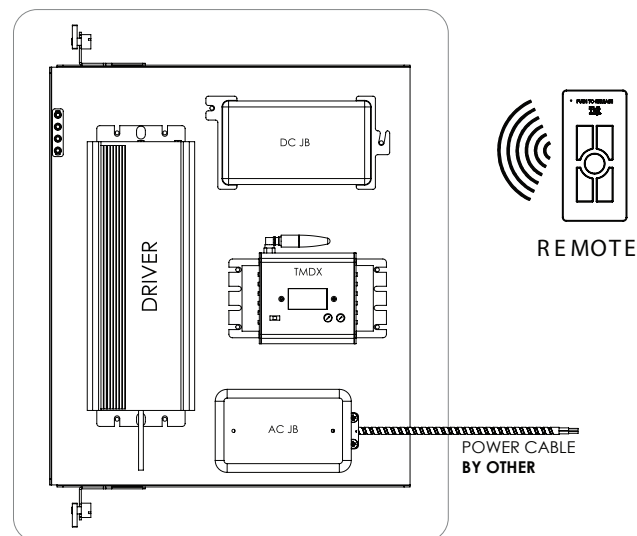


## CONTROL

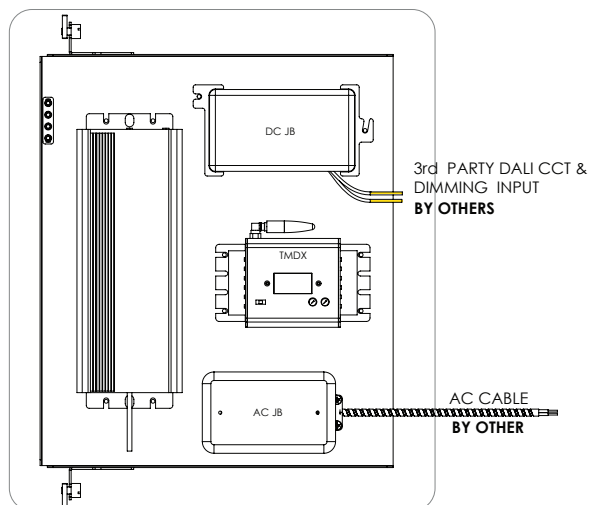
### 0-10V (0/10)



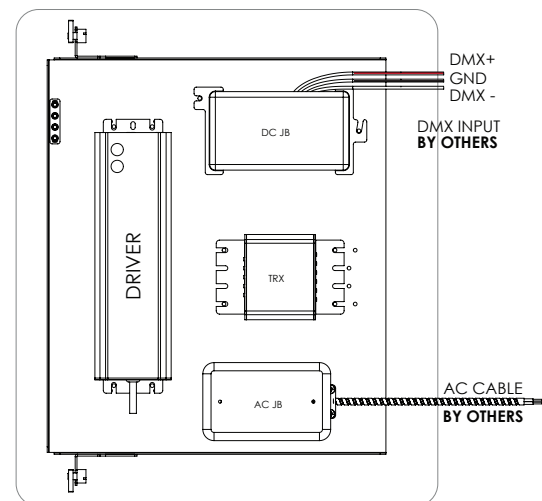
### RF Remote (RM)



### Dali (DA)



### DMX (DMX)



### Electrical

Driver models	HLG-60-24A, HLG-100-24A, HLG-150-24A, HLG-240-24A, HLG-320-24A
Input voltage	90-305 V AC, 47-63 HZ
Output voltage	21-24 V DC